

THIS IS
NOT A
SUGGESTION!



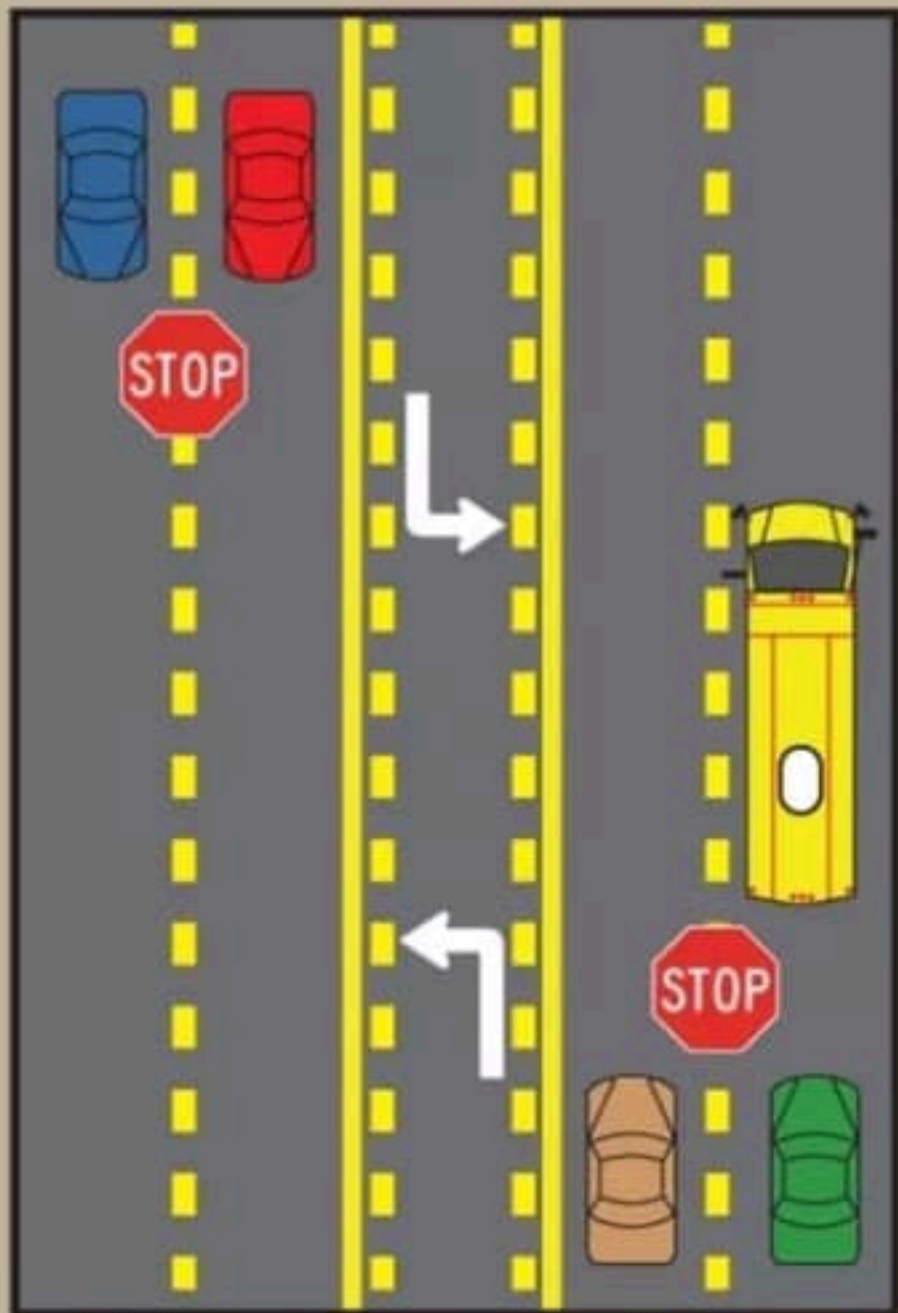
SCHOOL
BUS

STOP

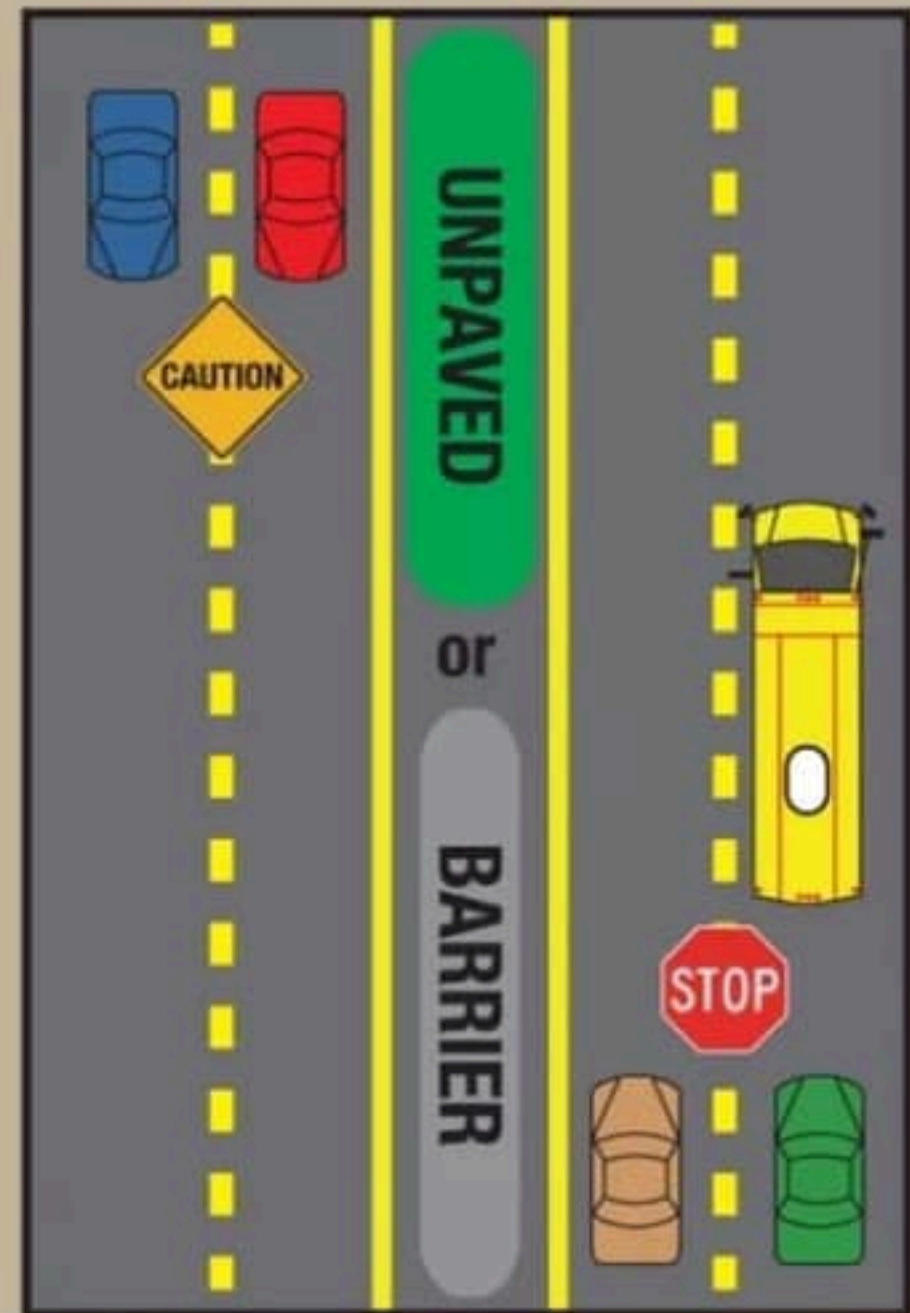
ON
SIGNAL



TWO-LANE:
Vehicles traveling in both directions **MUST** stop.



MULTI-LANE PAVED ACROSS:
Vehicles traveling in both directions **MUST** stop.



DIVIDED HIGHWAY:
[Unpaved space (Min. 5ft.) OR any raised median or physical barrier.]
Vehicles behind bus **MUST** stop.
Vehicles traveling in the opposite direction proceed with caution.